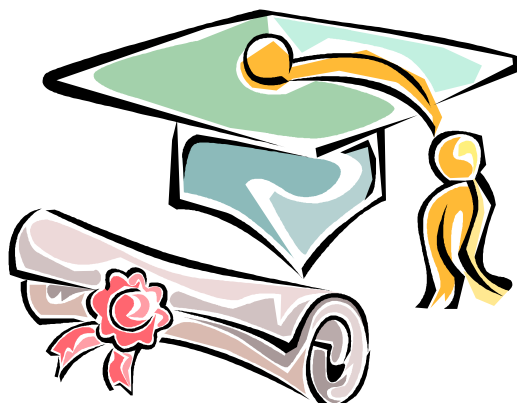




Guidance & Counseling Services

▶ Guidance and counseling services are available to assist any individual in setting short or long term goals, personal adjustment, career or vocational planning and information on other educational programs and financial aid.



Tuition & Fees

GED	\$60 test fee
ABE	No charge
ISS	Per credit charge equal to the prevailing summer school rate

For further information contact:
Coordinator, Adult Education
570-323-4785, ext. 312 (M-Th, 7-9 p.m.)

Williamsport Area School District

Curtin Middle School
85 Eldred Street
Williamsport, PA 17701

Phone: 570-323-4785, ext. 312
Fax: 570-326-3131
<http://www.wasd.org>

Williamsport Area School District



▶ Adult Education Program

**ABE Instruction
GED Classes
Independent Supervised Study**

**Tel: 570-323-4785, ext. 312
Monday-Thursday, 7-9 p.m.**

General Education Development (GED)

Eligibility:

- Age 18 or older — or:
 - * Last class that you attended school with has graduated
 - * Not enrolled in a regular high school program

Subjects:

- Language Arts, Writing
- Social Studies
- Science
- Language Arts, Reading
- Mathematics

Schedule:

- Classes are scheduled for either Monday & Wednesday or Tuesday & Thursday evenings at Curtin Middle School.
- Each of the five subjects are taught for ten nights, two nights each week, from 7 to 9 p.m.
- Tests are given at the end of each ten-night session
- Five sessions are offered each school year, September to May
- Registration is on Tuesdays **AT 7 p.m.** from September to April. All new students will be given a basic skills assessment test.

Diploma:

- A GED Diploma is issued by the State of Pennsylvania by attaining a score of at least 410 points on each of the five tests and a total of 2250 points
- A Williamsport Area High School diploma is issued for attaining a total of 2750 points and attending at least 70 hours of class and passing the local Pennsylvania System of School Assessment (PSSA).

Adult Basic Education (ABE)

Eligibility:

- Age 18 or older

Subjects:

- Reading
- Writing
- Spelling
- English as a Second Language
- Mathematics
- Consumer Education
- Pre-GED Subjects

Schedule:

- Classes at Curtin Middle School
- Mon-Tues-Wed, 7–9 p.m.
- September to May

Satellite Programs

Locations :

PA CareerLink-Lycoming County
Ashkar Elementary School, Hughesville
Jersey Shore High School, Jersey Shore
Lycoming County Prison & Pre-Release Center

Subjects:

- Adult Basic Education program in Reading, Writing, Spelling, Mathematics, and Consumer Education
- GED test preparation program in Language Arts, Writing; Social Studies; Science; Language Arts, Reading and Math

Schedule:

- Classes are conducted at:
 - * PA CareerLink-Lycoming County
Monday & Thursday
Open Enrollment, Registration and Pre-testing
Tuesday, Wednesday & Friday
Managed Enrollment
8:30 a.m.—12 Noon—Open all year
 - * Ashkar Elementary School
Hughesville, PA
Tuesday & Wednesday, 7–9 p.m.
Sept.-May

- * Jersey Shore Senior High School
Jersey Shore, PA
Monday & Wednesday, 6-8 p.m
September-May

Diploma:

- A GED Diploma is issued by the State of Pennsylvania by attaining a score of at least 410 points on each of the five tests and a total of 2250 points
- A Williamsport Area High School diploma is issued for attaining a total of 2750 points and attending at least 70 hours of class and passing the local PSSA.

Independent Supervised Study (ISS)

Eligibility:

- Age 18 or older — or:
 - * Last class that you attended school with has graduated
 - * Not enrolled in a regular high school program
 - * Only need one or two credits to fulfill all graduation requirements

Subjects:

- Any required school subject
- Any selected elective

Schedule:

- Monday through Wednesday
- 7–9 p.m.
- September to May

Diploma:

- A Williamsport Area High School Diploma will be issued upon successful completion of all required subjects and passing the local PSSA.

Williamsport Area
School District

Williamsport, PA 17701
Phone: 570-323-4785, ext. 312
Fax: 570-326-3131
<http://www.wasd.org>